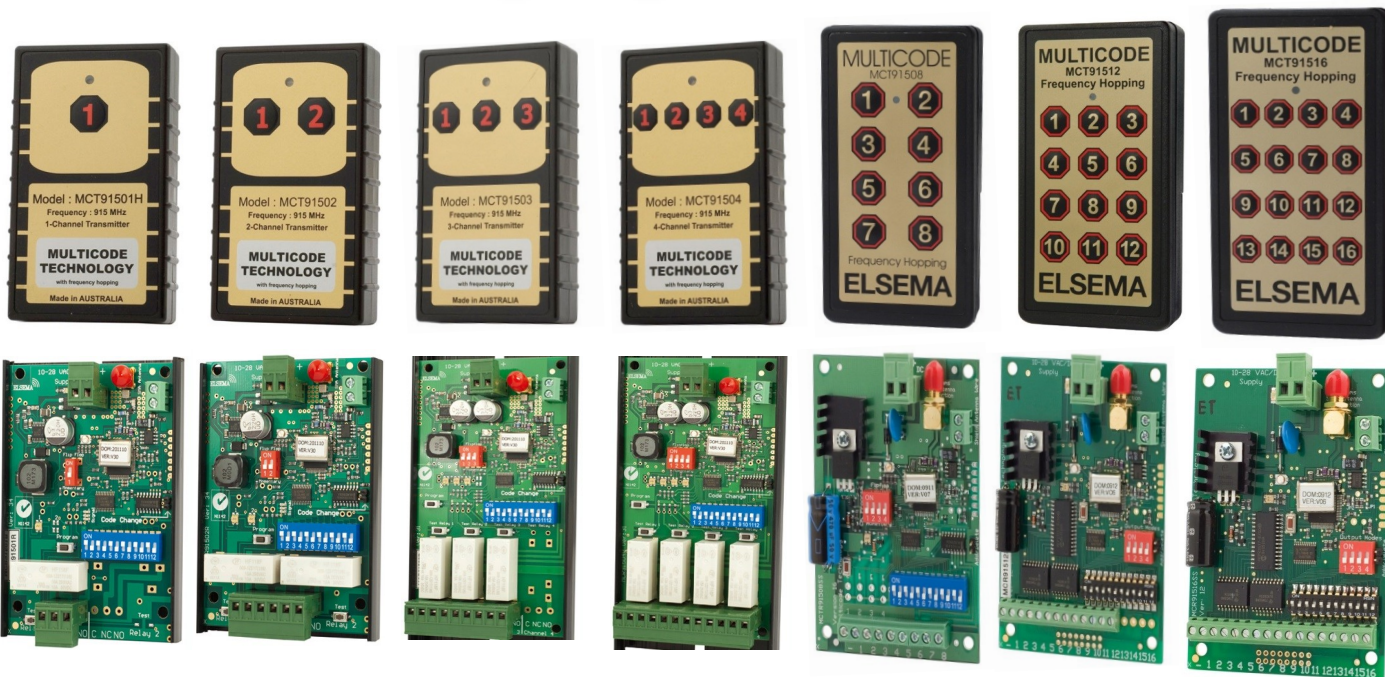




Long Range Multi Channel Transmitters & Receivers



Elsema Long Range Series

- 915Mhz Frequency
- Long Range up to 1 kilometre
- 1 to 16 Channel Transmitters
- 1 to 16 Channel Receivers
- Relay output (Com, No, Nc)
- Pulse or flip flop latching
- Dip switch selectable coding
- Power Input 12v/24v AC/DC
- Tough rubber cover surround
- 100mm Long range antenna (SMA)
- 700mm Long range antenna (SMA)



ATA & B&D Transmitters & Receivers



ATA & B&D Transmitters

1. ATA PTX4 Four button 433Mhz (Blue)
2. ATA PTX5v1 Four button 433mhz
3. ATA PTX5v2 Four button Tricode
4. ATA PTX6v1 Four button 128-bit (Grey)
5. ATA PTX6v1 Four button 128-bit (Black)
6. B&D TB6 Four button 433Mhz (Black)
7. B&D TB6 Four button 433Mhz (Red)



ATA & B&D Receivers

- FHCXR1 Single Channel Receiver
- FHCXR2 2 Channel Receiver
- Power input 12/24V AC/DC
- Relay Output (Com, No, Nc)
- External Antenna
- KPX7-v2 Wireless Keypad (4channel)



FAAC Transmitters & Receivers



FAAC Transmitter & Receivers

- FAAC SLH XT2 Four button transmitter
- FAAC SLH XT4 Four button transmitter
- FAAC DS 1 Button transmitter 433Mhz
- FAAC DS 2 Button transmitter 433Mhz
- FAAC 433Mhz 2 channel receiver



ATA & B&D Transmitters & Receivers



ATA PTX4
Four button
433Mhz (Blue)



ATA PTX5v1
Four button
433mhz



ATA PTX5v2
Four button
Tricode



ATA PTX6v1
Four button
128-bit (Grey)



ATA PTX6v1
Four button
128-bit (Black)



B&D TB6
Four button
433Mhz (Black)



B&D TB6
Four button
433Mhz (Red)



ATA WTX4v2
Four button
Wall Mount



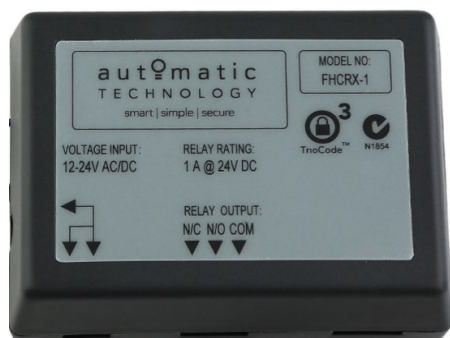
ATA WTX4v2
Four button
Wall Mount



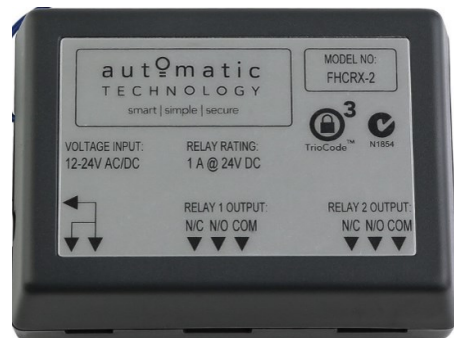
ATA EATv2
Transmitter
(Inc adjustable cord)



ATA KPX7v2
Four Channel
Wireless Keypad



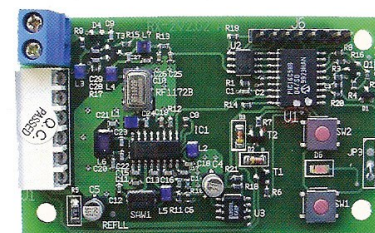
ATA FHCRX1
Single Channel Receiver
Power input 12/24V AC/DC
1 x Relay Output (Com, No, Nc)
511 Tx Memory



ATA FHCRX2
2 Channel Receiver
Power input 12/24V AC/DC
2 x Relay Output (Com, No, Nc)
511 Tx Memory



ATA MEGACODE
4 Channel Receiver with LCD Screen
Programmable outputs
Programmable Timers
Power input 12/24V AC/DC
4 x Relay Output / 4 Trigger Inputs
511 Tx Memory



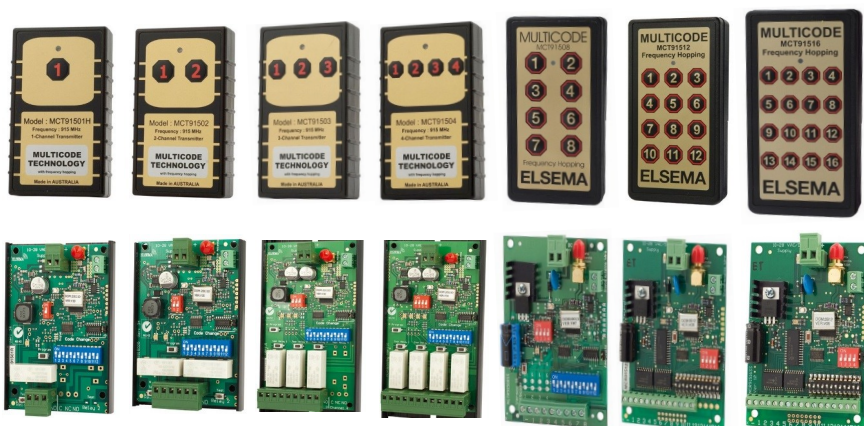
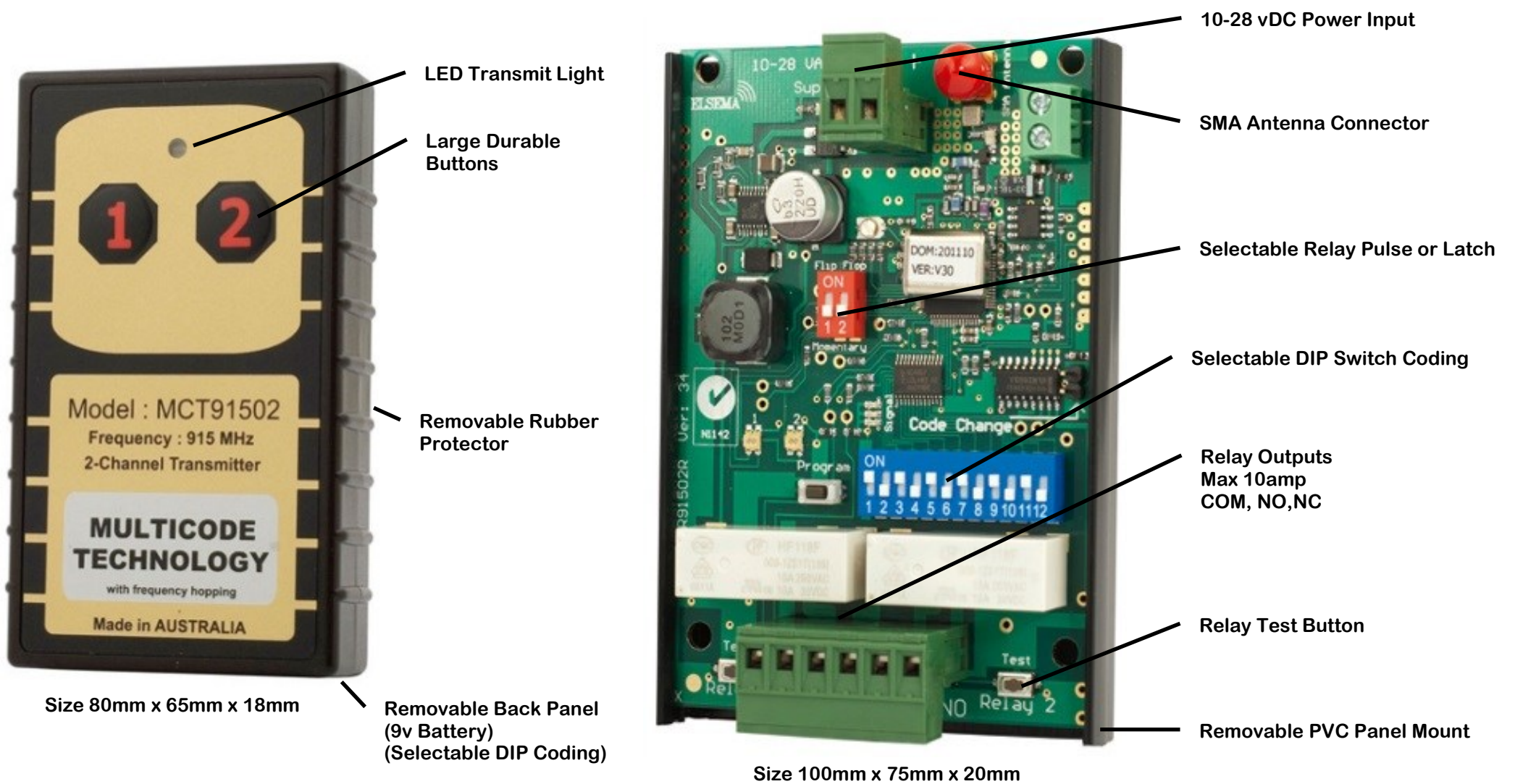
ATA FHRX2v2
2 Channel Receiver
Plug-in Receiver
(Suits 6pin socket controllers)



433Mhz
External Antenna



Elsema Long Range Multi Channel Transmitters & Receivers



Elsema Long Range Series

- 915Mhz Frequency
- Long Range up to 1 kilometre
- 1 to 16 Channel Transmitters
- 1 to 16 Channel Receivers
- Relay output (Com, No, Nc)
- Pulse or flip flop latching
- Dip switch selectable coding
- Power Input 12v/24v AC/DC
- Tough rubber cover surround
- 100mm Long range antenna (SMA)
- 700mm Long range antenna (SMA)

